

PSYCHOLOGY NEWSLETTER

WESTERN ILLINOIS UNIVERSITY PSYCH DEPARTMENT

SUMMER 2023

FROM THE CHAIR

Dr. David Lane

DJ-Lane@wiu.edu



Psychology is thriving at WIU. We have approximately 350 undergraduate Psychology majors, making us one of the largest majors on campus (second only to Law Enforcement and Justice Administration). On the Macomb campus there are approximately 95 Forensic Psychology majors and 195 general Psychology majors, with 60 majors on the Quad Cities campus. The Clinical/Community Mental Health, General Experimental Psychology, and School Psychology graduate programs have approximately 50 students combined. As you can tell, we remain a popular option for students.

Because of the generosity of donors, we continue to be able to offer scholarships to both undergraduate and graduate students, to invite researchers from other campuses to visit us and meet with our students, and to pay for technology that is important to student education. For example, this year the Department bought iPads that Clinical and School graduate students are using in their Assessment classes. Thank you to all donors, and consider donating when the University Foundation contacts you this Fall.

If you have any questions about the department, don't hesitate to reach out. I am happy to talk with you.

Best,
David Lane, Ph.D.

HIGHLIGHTS

Autism Clinic

New Faculty Member

Student Awards

Clinical Program Celebrates 50 Years

Faculty Departures

CONTACT US

Psychology Department
Western Illinois University
1 University Circle
Macomb IL 61455

309-298-1593

Email: Psychology@wiu.edu

Facebook: [wiupsychology](https://www.facebook.com/wiupsychology)

Instagram: [wiupsychology2023](https://www.instagram.com/wiupsychology2023)

www.wiu.edu/cas/psychology

PSYCHOLOGY COLLABORATES ON AUTISM CLINIC

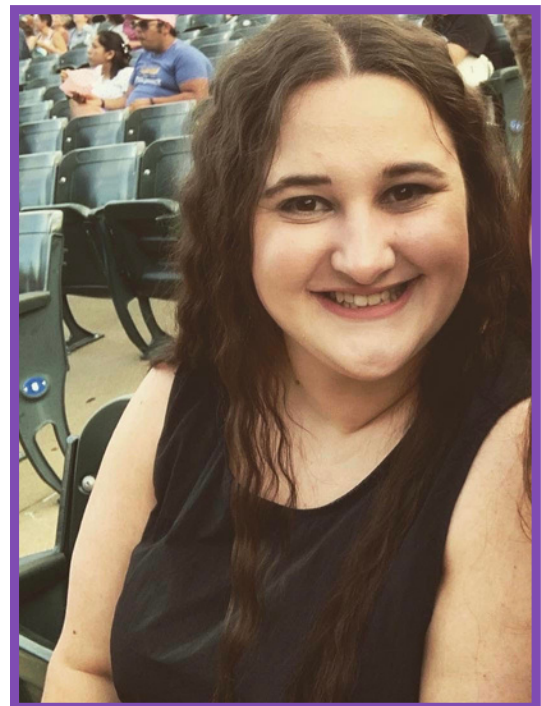
The newly established WIU **Autism Center for Excellence** (WIU ACE) is a collaboration between the **Psychology Department** and the Department of **Speech Pathology and Audiology**. The Autism Clinic provides free autism diagnostic evaluations with a priority for families with children ages 0-5. With a waitlist at other regional providers of 12-18 months for an assessment, WIU is trying to combine excellence in training for graduate students while also providing a much-needed service to the community. For more information please see the new website here: <https://www.wiu.edu/autismclinic/>

Although it does not provide a comprehensive assessment approach for all areas of need, families are still encouraged to contact our **Psychology Clinic** for comprehensive evaluations for young adults and therapeutic services. If you know of a family who may benefit from individual or family therapy or is in need of an evaluation, please see more information here: <https://www.wiu.edu/cas/psychology/clinic/>

NEW FACULTY MEMBER

Haley Humes returns to the department as an instructor, with her primary responsibility in the School Psychology graduate program. Haley holds a Specialist in School Psychology degree from our department, so this is a homecoming for her. Here she is in her own words:

"Since graduating the school psychology program in 2017, I worked as a certified school psychologist in rural districts in Missouri and Illinois. When I moved back to Illinois, I had the opportunity to supervise current graduate students in the school psychology program completing their practicum requirements. I have a huge passion for school psychology and found expressing that passion by working with future school psychologists extremely rewarding! I was excited to pursue the opportunity to instruct at WIU to continue working in the school psychology program, and pass on my love for school psychology to prospective undergraduate students."



UNDERGRADUATE STUDENT AWARDS

Mel Jones was the Department Scholar, recognizing top academic achievement in the major.



Mel Jones

Briana Turner and **Cole Jensen** won the Distinguished Junior Award, as well as James Joyce awards.

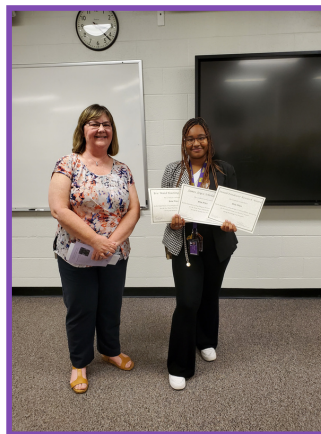


Briana Turner



Jensen with Dr. Keefe

Bria Price and **Courtney Wilkerson** were the winners of the Donald Poindexter Award. This scholarship was created by former faculty member Dr. Bem Allen to support students of color who excel academically and in extracurricular involvement. They also received James Joyce awards.



Price with Dr. Sears



Wilkerson with Dr. McGuire

Jayla Carle, **Elizabeth Denzler**, and **Courtney Norris** received James Joyce Awards. These monetary awards are named in honor of the founding Department Chair, and are given to students for their exemplary involvement in the Psychology Department.



Carle with Dr. McGuire



Denzler with Dr. McGuire



Courtney Norris

GRADUATE STUDENT AWARDS

The **Lori Lynne Myers Scholarship** was created in 1999 by the family of Myers, who was a School Psychology graduate who passed away unexpectedly. It is given annually to one or more School Psychology graduate students. This year the program started awarding the Scholarship for the upcoming academic year, resulting in two sets of scholarships.

Taylor Murphy received the 2023 Lori Lynne Myers Scholarship, while **Jessica Kennel**, **Katie Hernandez**, and **Jacquelyn Beaver** were runners-up. All received scholarship funds.



2023 winners with Dr. Fisler



2022 winners with Dr. Fisler

Autumn Buckley received the 2022 Lori Lynne Myers Scholarship, while **Christine Dispenza** and **Madeline Webb** were runners-up. All received scholarship funds.

Cynthia Morales received the **Alphonse J. Richert Scholarship**. This scholarship was established by Ruth Richert in memory of her husband Al, a long-time faculty member and director of both the Clinical/Community Mental Health graduate program and the Psychology Clinic.



Morales with Dr. Cruise

CLINICAL/COMMUNITY MENTAL HEALTH ANNIVERSARY

The Master's program in Clinical/Community Mental Health (CCMH) invited alumni and friends back to campus in April 2023 to celebrate 50 years. Events included a Friday evening social at the WIU Alumni House, a family social with breakfast and games at the Horn Field Lodge, and a luncheon program hosted in the Sherman Hall Auditorium featuring **Dr. Tracy Knight**, '78 and former Program Coordinator. Over 80 alumni representing half the graduating classes attended.



The CCMH Master's was established in 1972 shortly after Charlie Potkay began the Psychology Clinic in 1968. It was originally a one-year degree with the first graduate in 1973. It is now a 3-year program, including internship. We currently have 3 full-time licensed faculty members (Drs. Tiffany Bainter '08, Amy Louck '01, & Tracy Cruise), a program coordinator (Dr. Leigh Ann Fisler), and an alum fulfilling an adjunct position (Brandon Kutmas '15). The Program has graduated over 200 students from the program with the majority going on to work in mental health services while some also complete doctoral degrees.



FACULTY DEPARTURES

This year we reluctantly said goodbye to faculty **Karen Sears, Hiroko Sotozaki, Steve Dworkin,** and **Curt Dunkel**. Dr. Sears is an Industrial/Organizational Psychologist who retired after 33 years in the department; she served in numerous leadership roles including Department Chair. Dr. Sotozaki joined the faculty in 2007 and retired in December; she is a cognitive psychologist. Dr. Dworkin joined Psychology in 2009 as Department Chair, later returned to the faculty, and retired after 14 years at WIU; he is a Behavioral Psychologist. Dr. Dunkel is a Developmental Psychologist who resigned after 16 years in the Department.