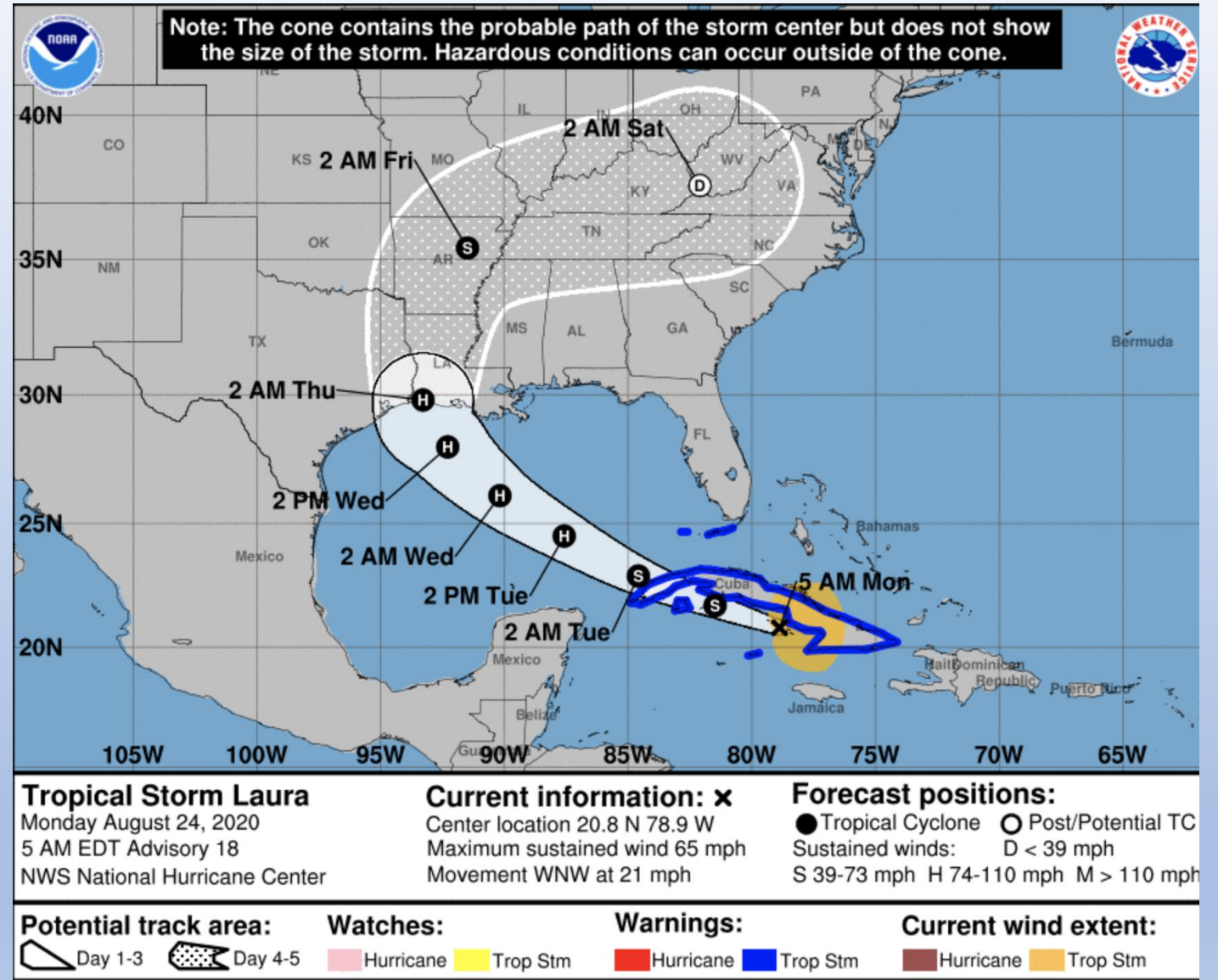


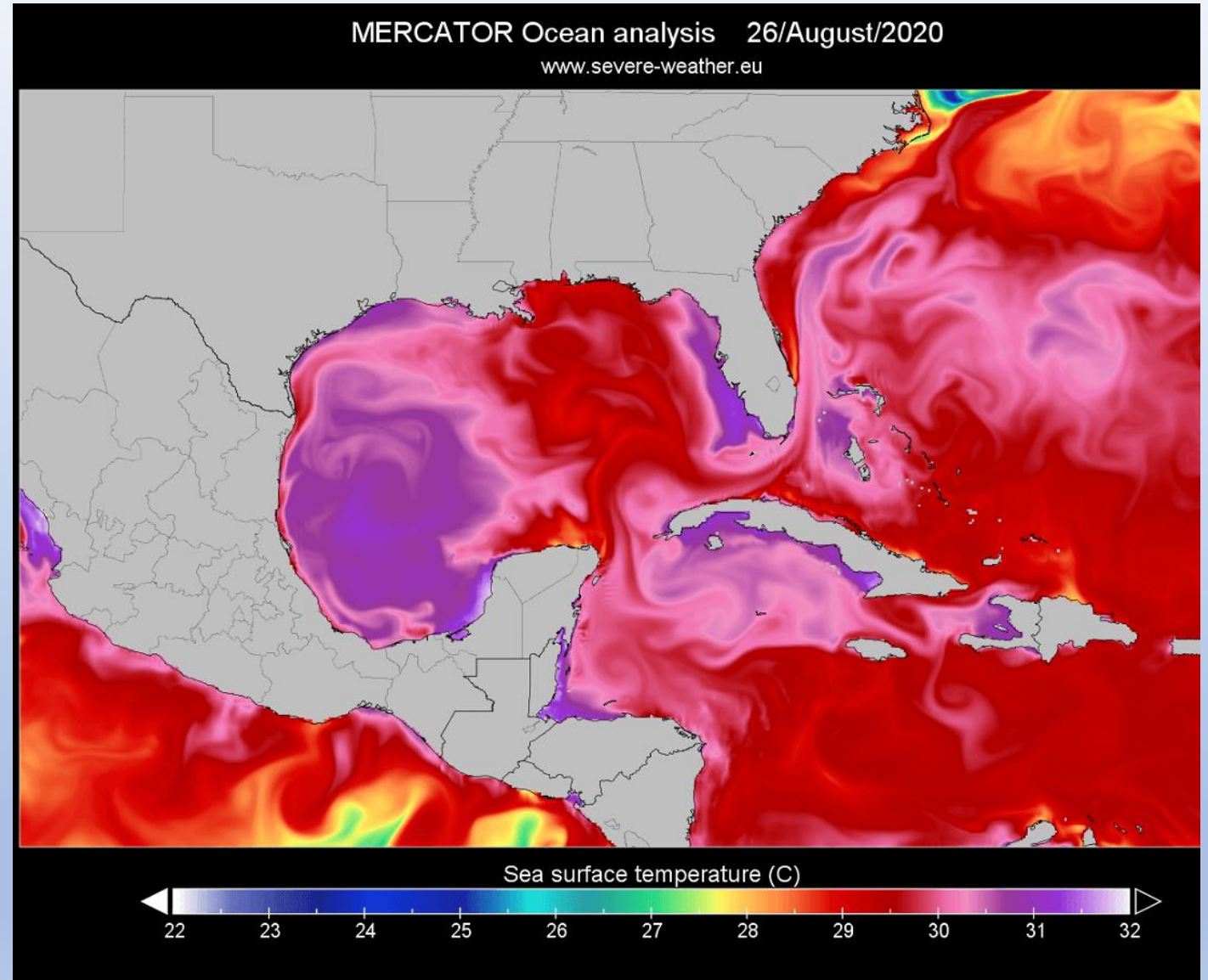
August 25-26, 2020

- Forecast very well in advance, NHC forecasted landfall point down to 0.6 miles of accuracy with 69 hours of lead time!
- Rapid intensification was noted in the discussion, although intensify forecasts were held low until the day prior
- Potential was there for a Cat 3+ landfall given low shear and high sea surface temperatures



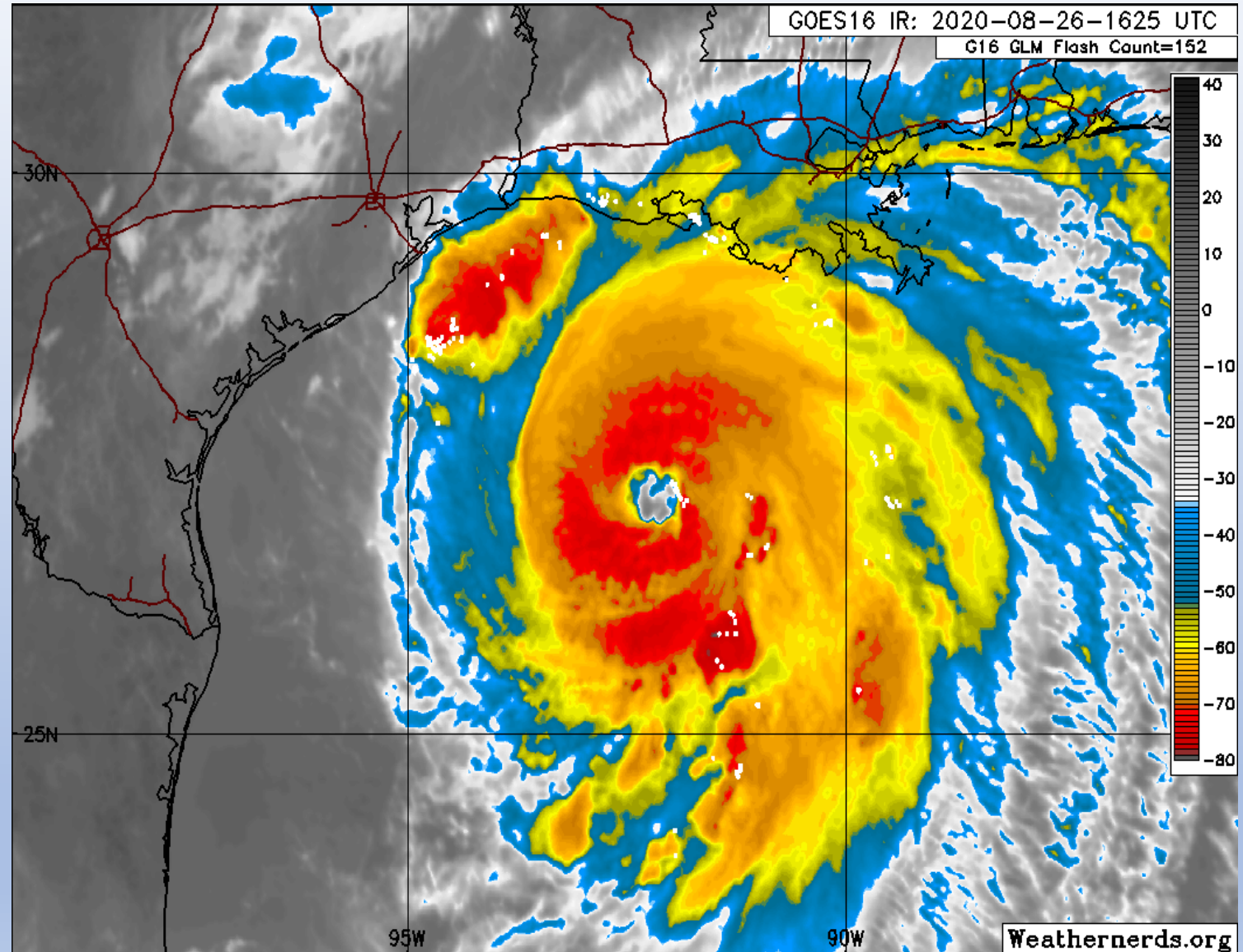
August 25-26, 2020

- Forecast very well in advance, NHC forecasted landfall point down to 0.6 miles of accuracy with 69 hours of lead time!
- Rapid intensification was noted in the discussion, although intensify forecasts were held low until the day prior
- Potential was there for a Cat 3+ landfall given low shear and high sea surface temperatures



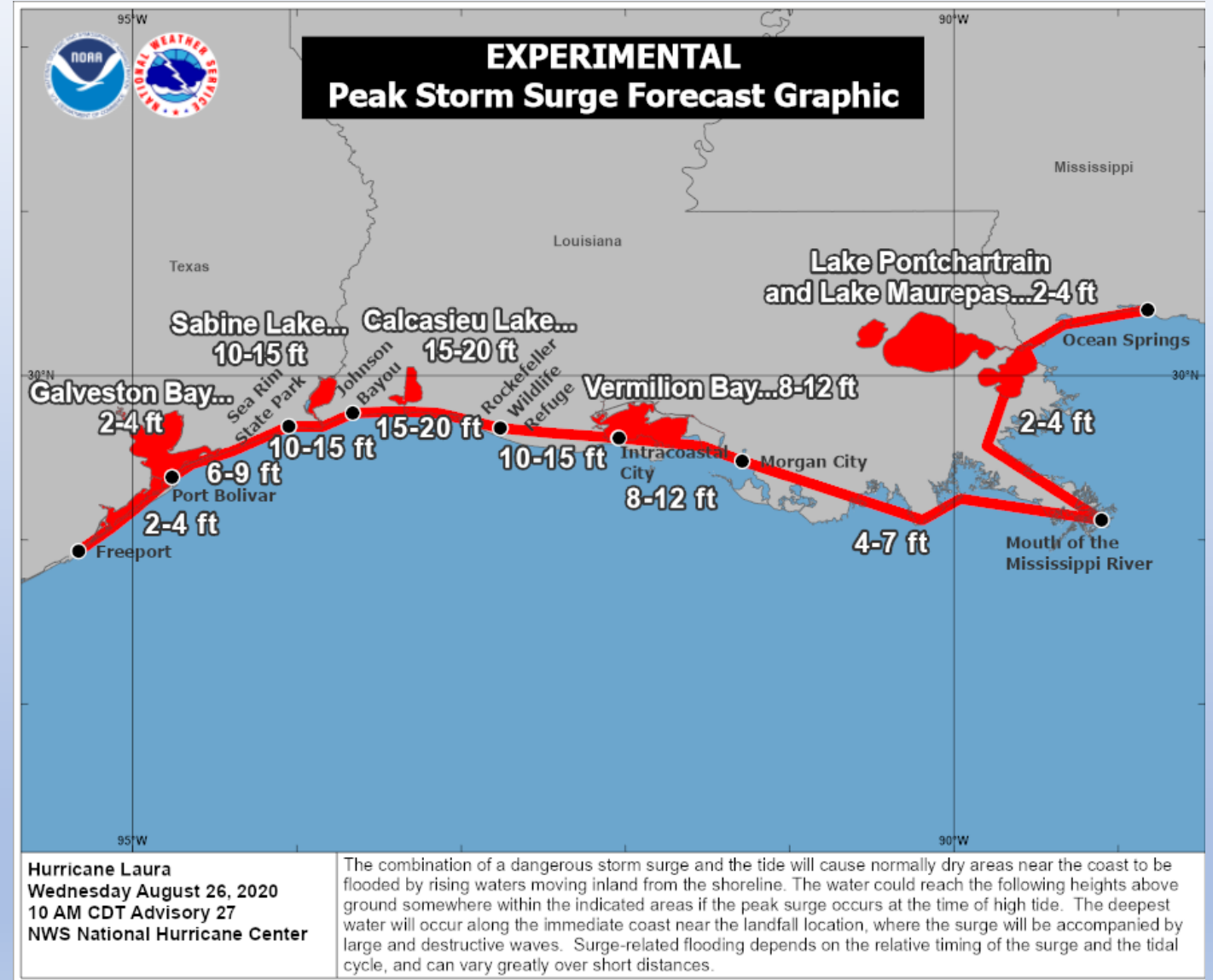
August 26-27, 2020

- Laura forms into a major Category 3 hurricane on the morning of August 26
- Forecast to make landfall now as a Category 4 storm around 1am near Cameron, LA
- Storm surge of 15-20 feet predicted



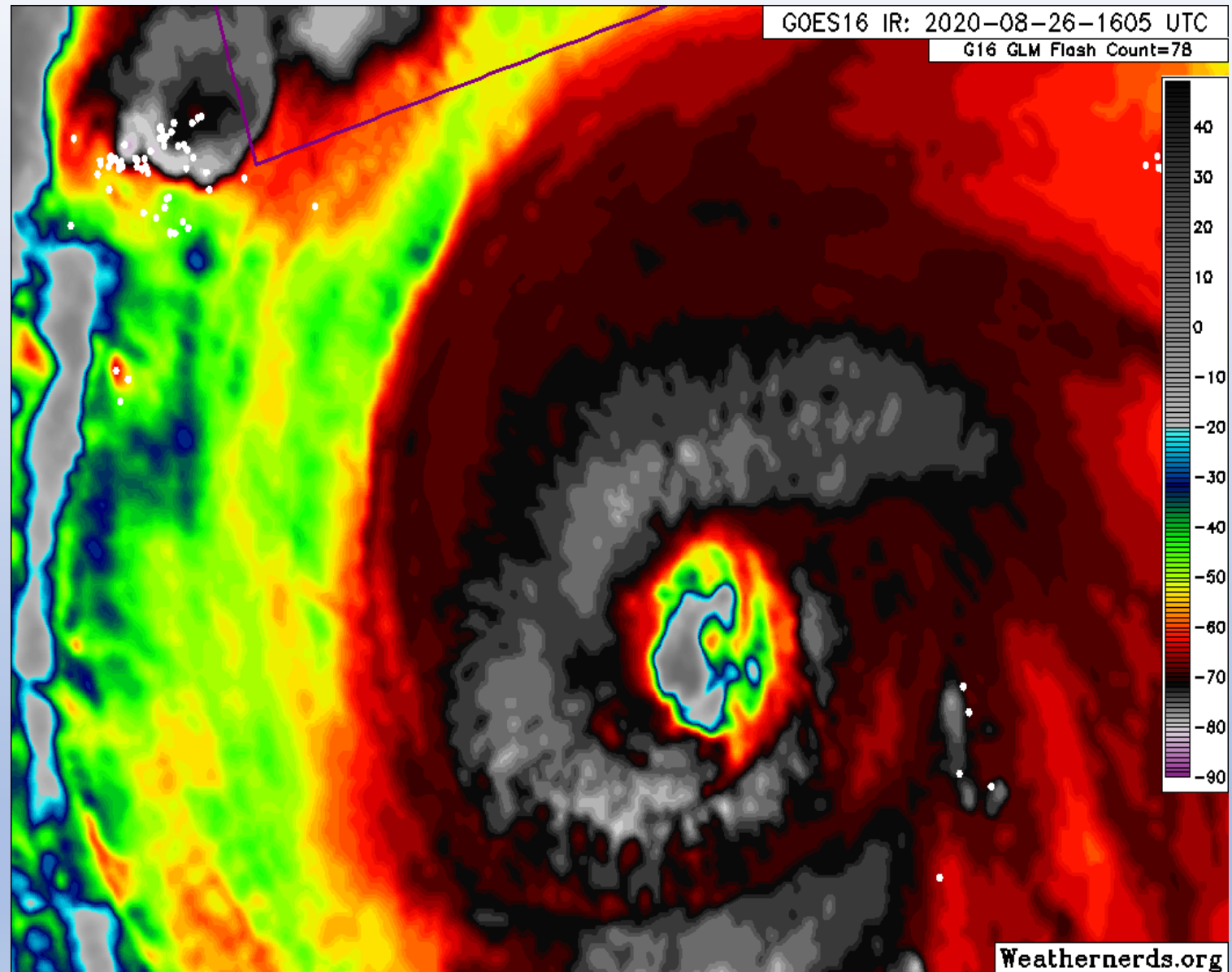
August 26-27, 2020

- Laura forms into a major Category 3 hurricane on the morning of August 26
- Forecast to make landfall now as a Category 4 storm around 1am near Cameron, LA
- Storm surge of 15-20 feet predicted



August 26-27, 2020

- Approaches coast at evening as a Category 4 storm (high end with 150 mph winds).
- 65 mph (55 knot) increase in intensity over 24 hours
- Several "hot towers" continuously explode in the northern eyewall along with warming and clearing in the eye.

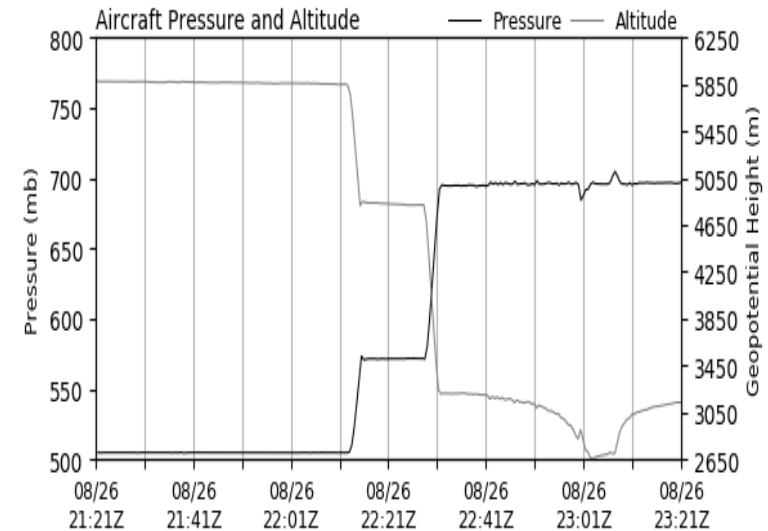
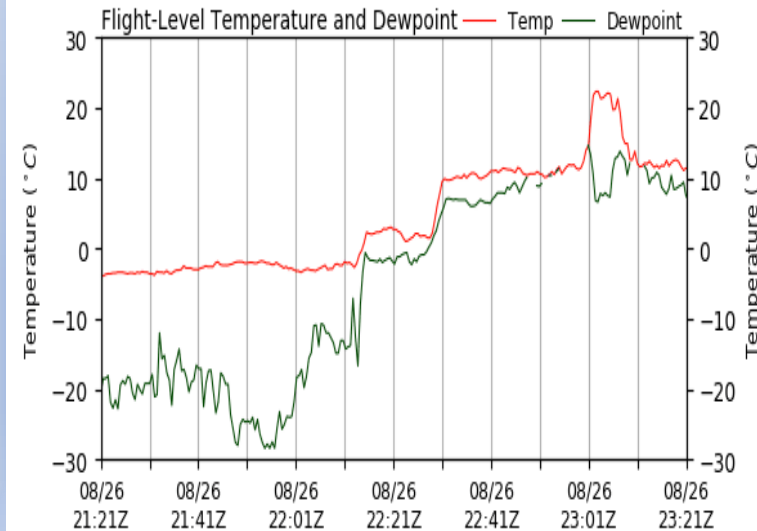
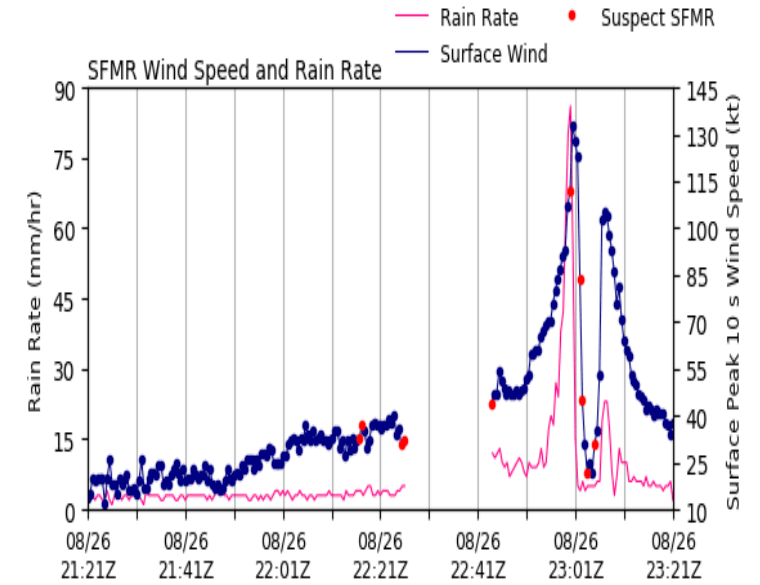
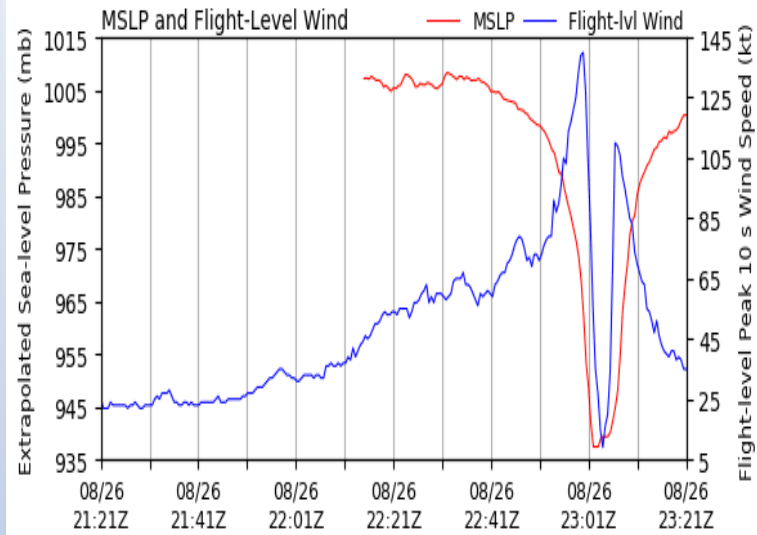


August 26-27, 2020

- Lake Charles doppler radar begins picking up Hurricane Laura by evening hours.
- NWS LCH hands operations over to Brownsville NWS office and evacuates ahead of predicted 30+ mile inland surge event
- Aircraft reconnaissance detects falling pressure and increasing winds

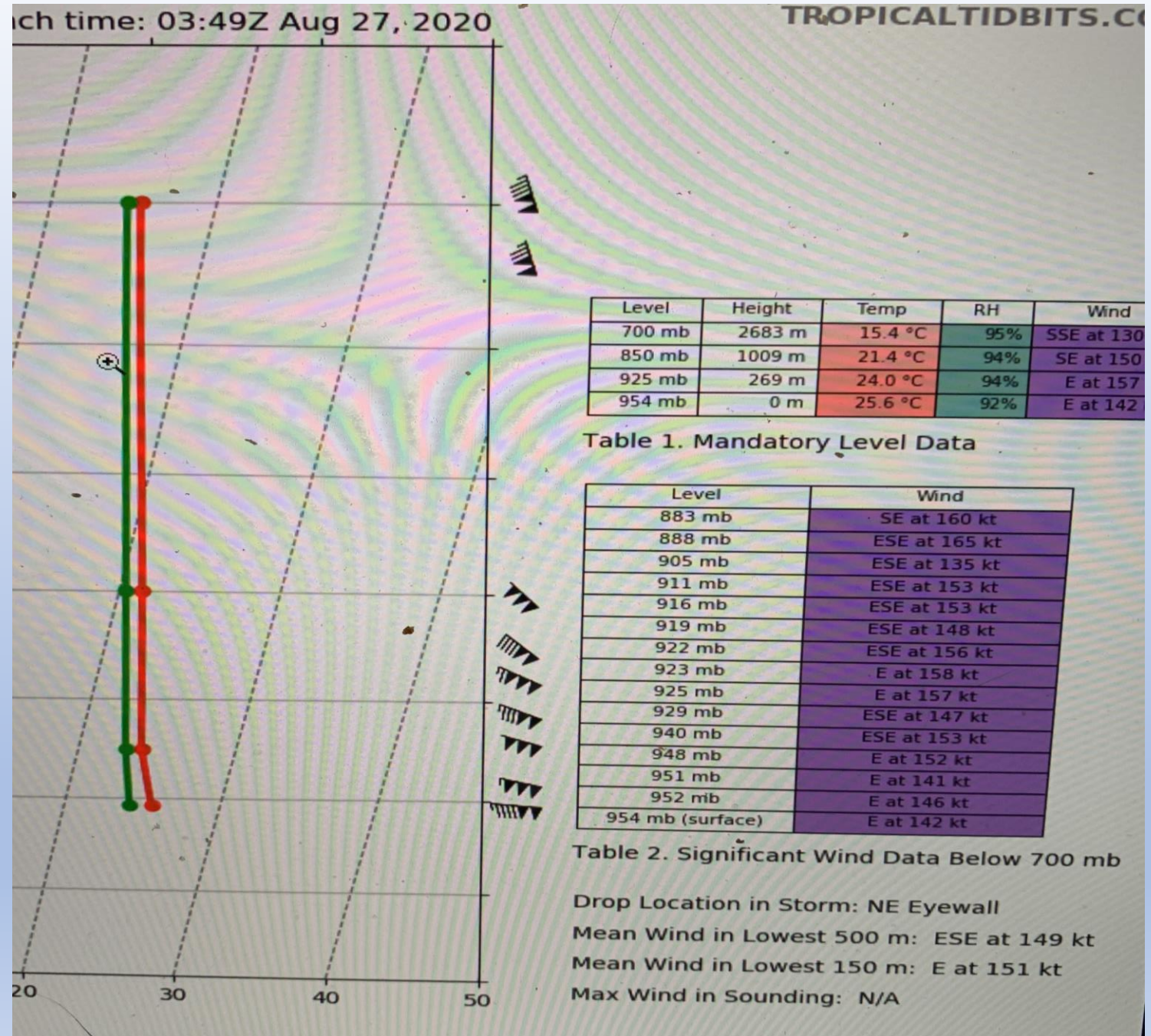
Recon Aircraft Observations

Mission ID: NOAA2 2413A LAURA Levi Cowan - tropicaltidbits.com



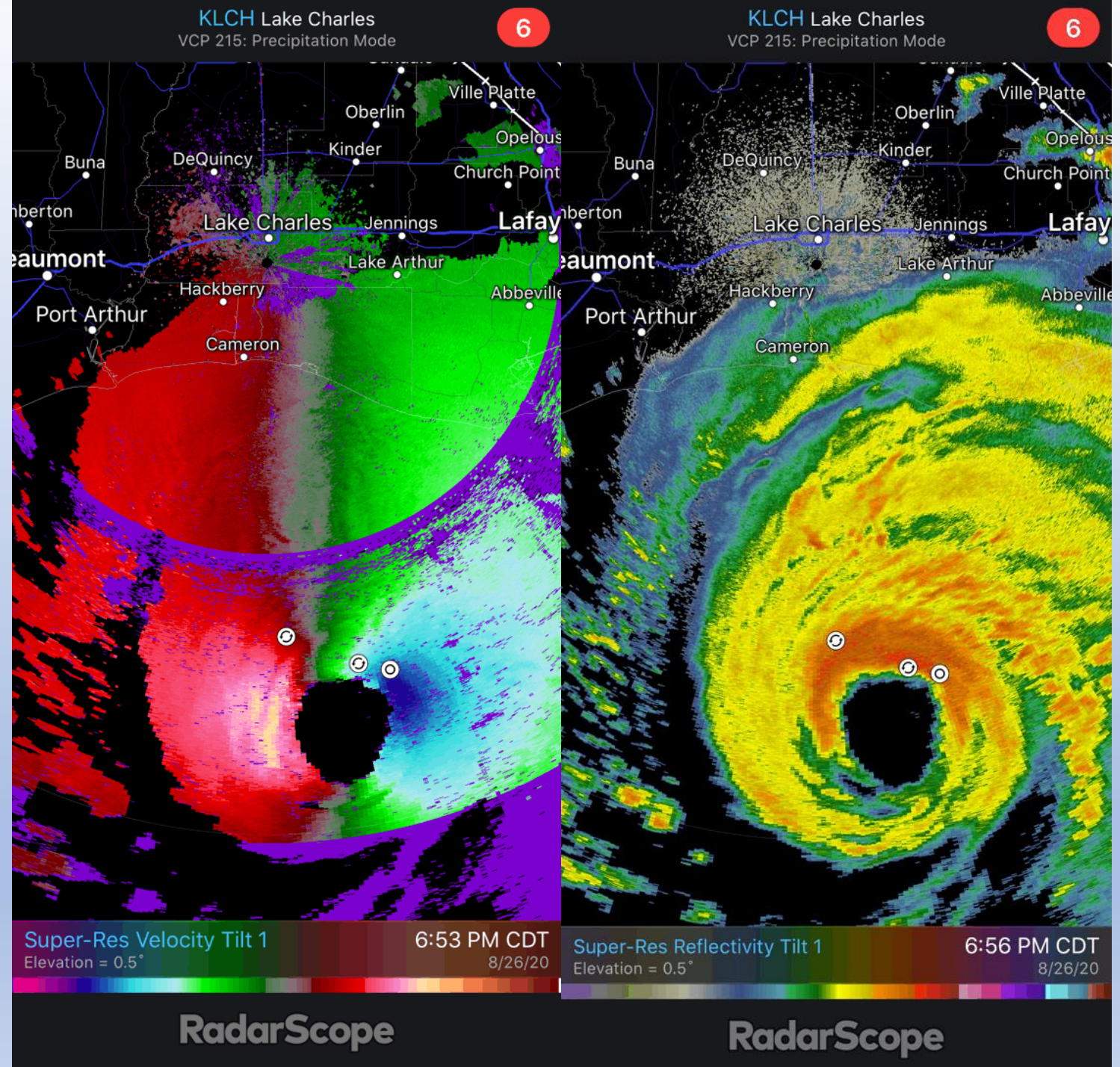
August 26-27, 2020

- Lake Charles doppler radar begins picking up Hurricane Laura by evening hours.
- NWS LCH hands operations over to Brownsville NWS office and evacuates ahead of predicted 30+ mile inland surge event
- Aircraft reconnaissance detects falling pressure and increasing winds



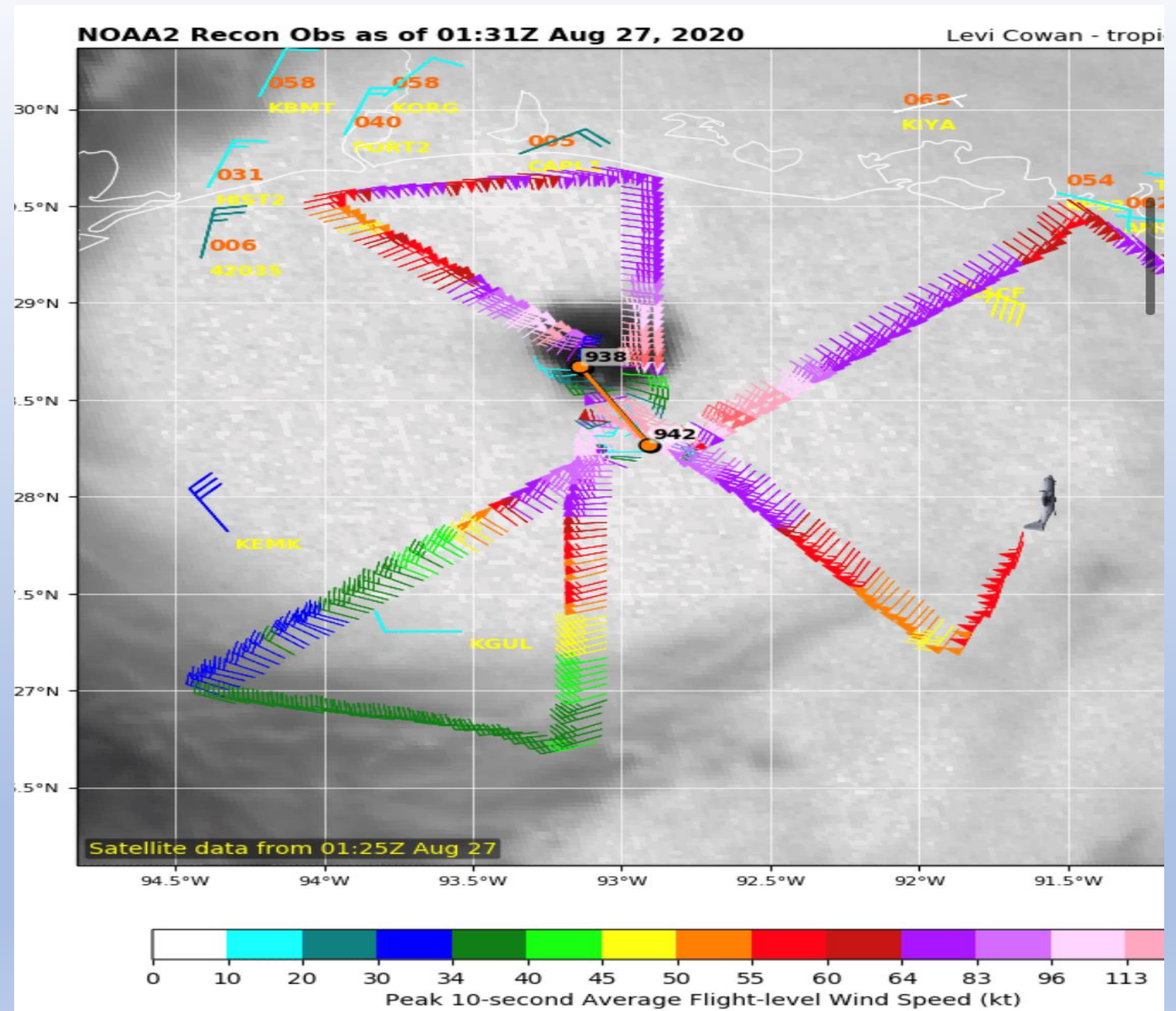
August 26-27, 2020

- Lake Charles doppler radar begins picking up Hurricane Laura by evening hours.
- NWS LCH hands operations over to Brownsville NWS office and evacuates ahead of predicted 30+ mile inland surge event
- Aircraft reconnaissance detects falling pressure and increasing winds



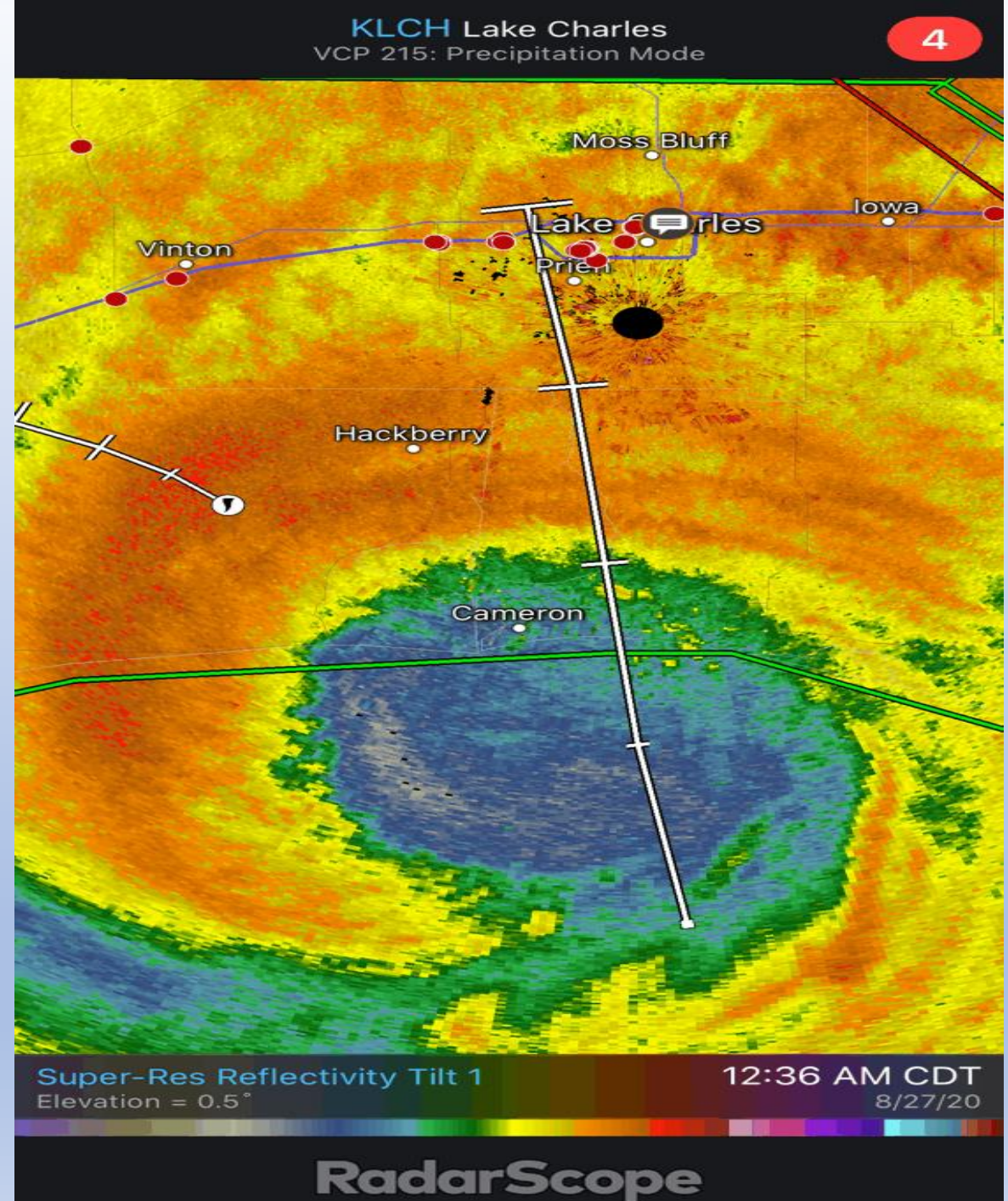
August 26-27, 2020

- Lake Charles doppler radar begins picking up Hurricane Laura by evening hours.
- NWS LCH hands operations over to Brownsville NWS office and evacuates ahead of predicted 30+ mile inland surge event
- Aircraft reconnaissance detects falling pressure and increasing winds
- 150 mph winds and 937 mb minimum pressure



August 26-27, 2020

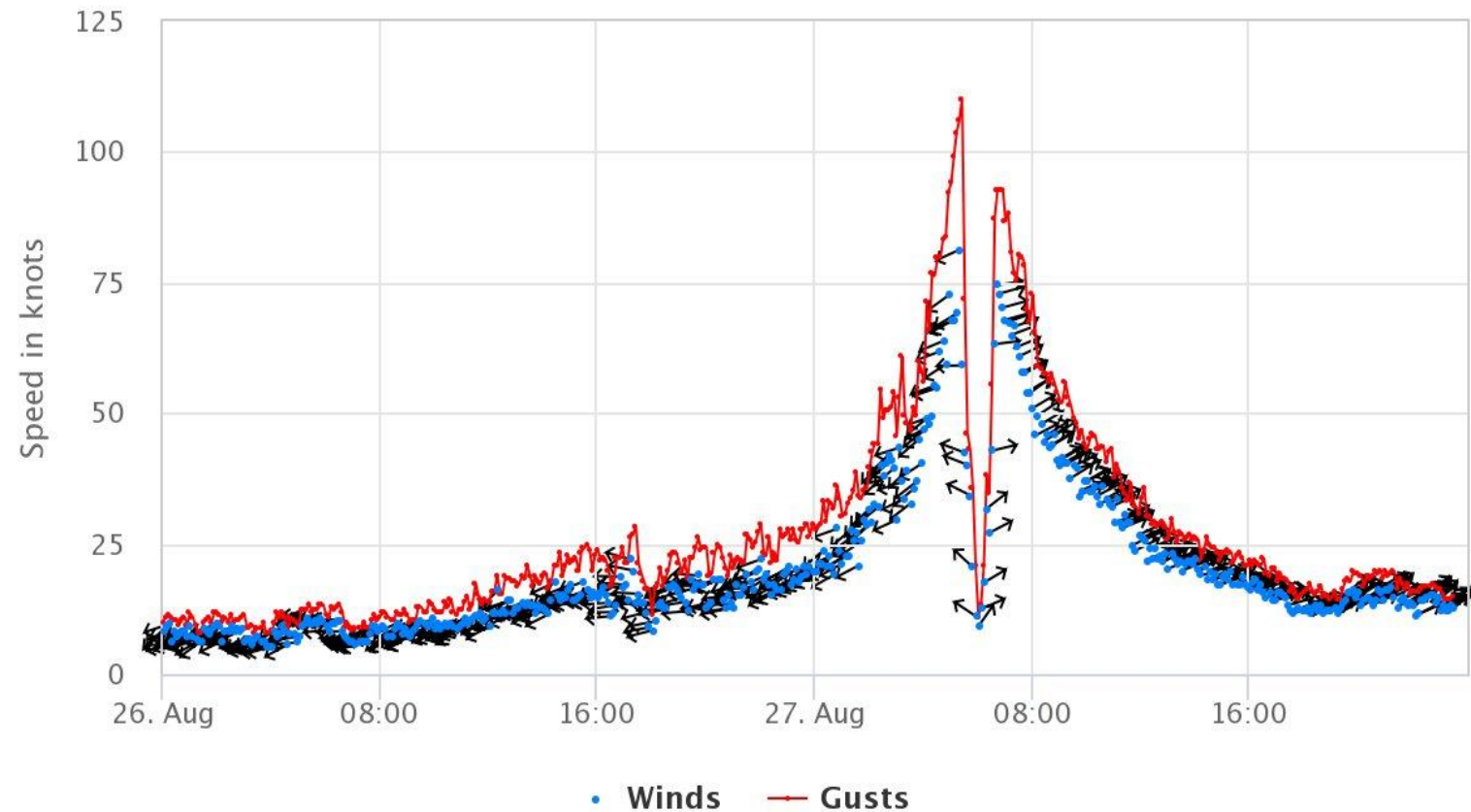
- Laura makes landfall near Cameron, LA at 1am local time as a Category 4 hurricane with 150 mph winds.
- Observations near Cameron, LA indicate wind gusts near 127 mph
- Surge could have been as high as 17 feet in localized spots near Holly Beach, LA (still being investigated at this time).
- NWS LCH radar goes down at 12:53AM
- Mesovortices in the eye



August 26-27, 2020

- Laura makes landfall near Cameron, LA at 1am local time as a Category 4 hurricane with 150 mph winds.
- Observations near Cameron, LA indicate wind gusts near 127 mph
- Surge could have been as high as 17 feet in localized spots near Holly Beach, LA (still being investigated at this time).
- NWS LCH radar goes down at 12:53AM
- 938mb pressure at landfall near Cameron, LA

NOAA/NOS/CO-OPS
Winds at 8768094, Calcasieu Pass LA
From 2020/08/26 00:00 GMT to 2020/08/27 23:59 GMT



August 26-27, 2020

- Highest wind gust inland with Laura was 137 mph near Lake Charles, LA. Airport officially gusted to 133.5 mph before radar got destroyed and ASOS went down
- 955.0MB at Lake Charles Airport
- Widespread wind damage and power outages
- Limited inland storm surge
- Power still out 2 weeks later for many
- Highest sustained wind near 98 mph at Lake Charles.
- Mesovortices likely enhanced damage

Log in Sign up

 **IEMBot LCH**
@iembot_lch


LAKE CHARLES MUNI,LA (LCH) ASOS reports gust of 116 knots (133.5 mph) from E @ 0642Z -- KLCH 270653Z AUTO 11085G115KT 1/4SM FG VV006 25/ A2831 RMK AO2 PK WND 100116/0642 RAEMM PRESFR SLP594 P0013 T0250 PWINO \$


1:56 AM · Aug 27, 2020 from [Prien, LA](#) · [iembot](#)

Extreme Wind Warning

Valid Until
1:00 AM CDT Thursday
August 27, 2020

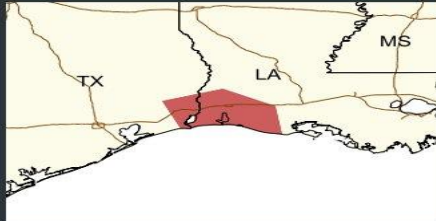

Threat Information



 **Hazard**
Extremely dangerous hurricane winds

 **Action To Take**
Move to an interior room NOW!

Potential Exposure

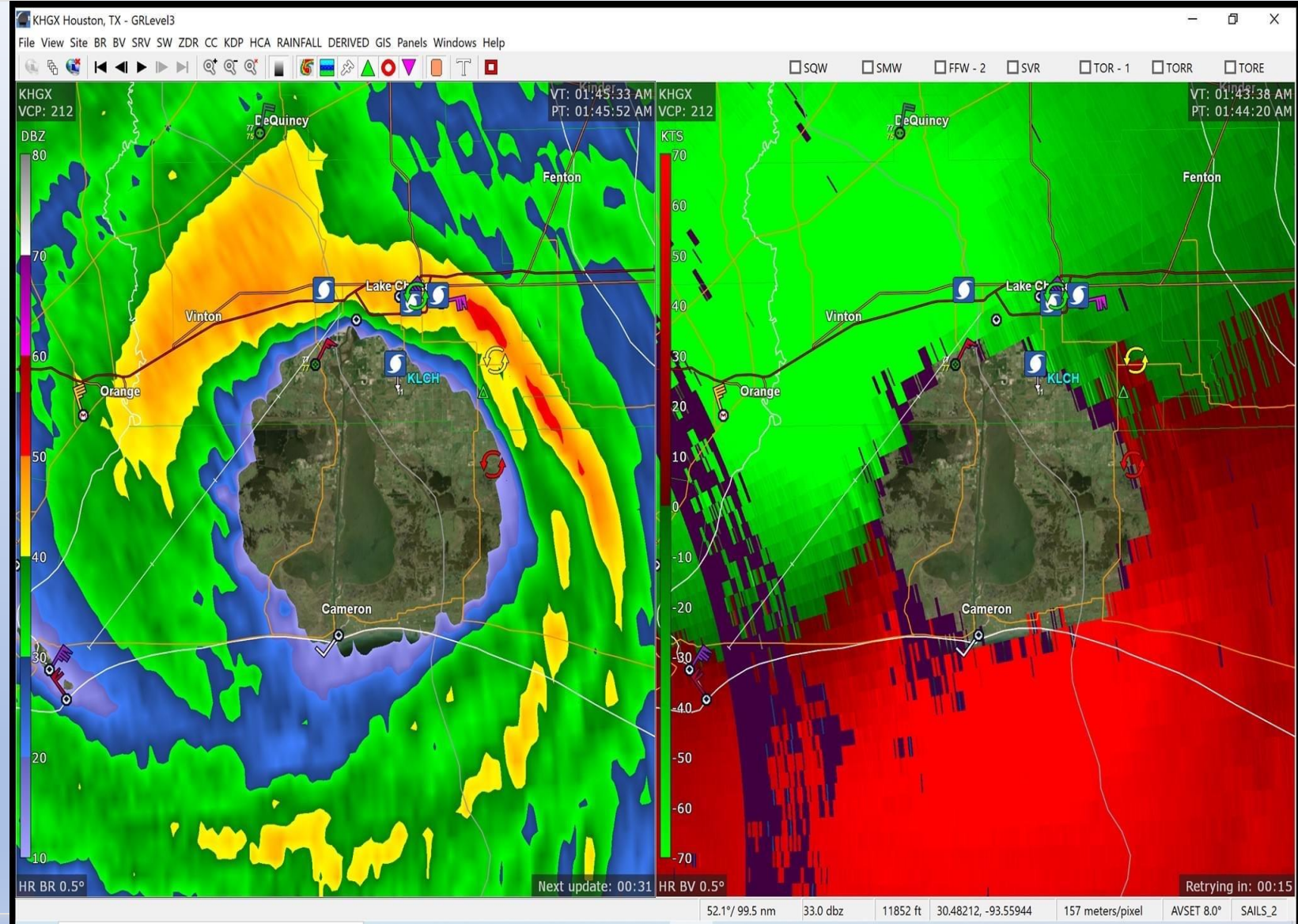
Population: 627,565
Schools: 231
Hospitals: 32



 
@NWSLakeCharles

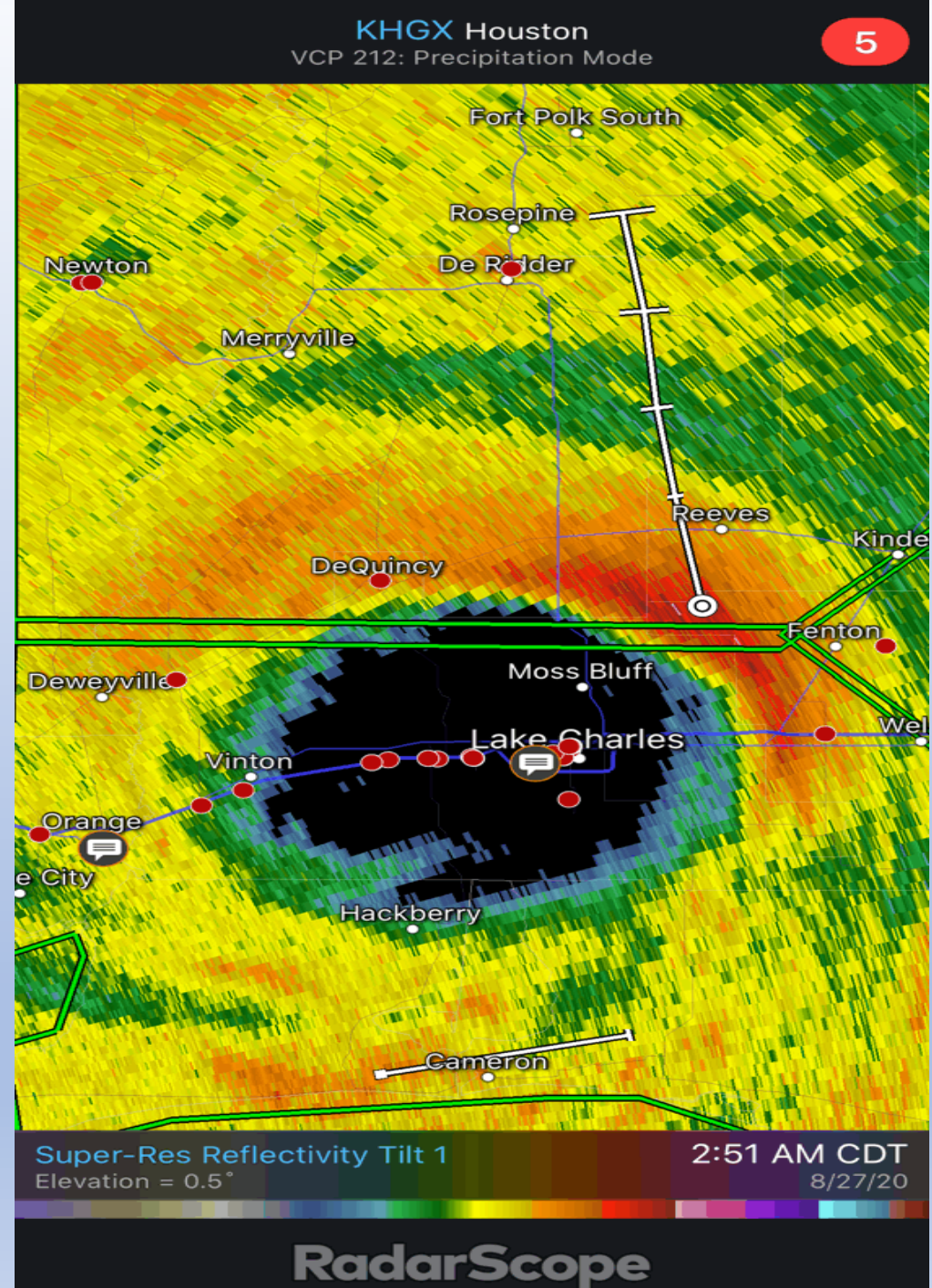
August 26-27, 2020

- Highest wind gust inland with Laura was 137 mph near Lake Charles, LA. Airport officially gusted to 133.5 mph before radar got destroyed and ASOS went down
- 955.0MB at Lake Charles Airport
- Widespread wind damage and power outages
- Limited inland storm surge
- Power still out 2 weeks later for many
- Highest sustained wind near 98 mph at Lake Charles.
- Mesovortices likely enhanced damage



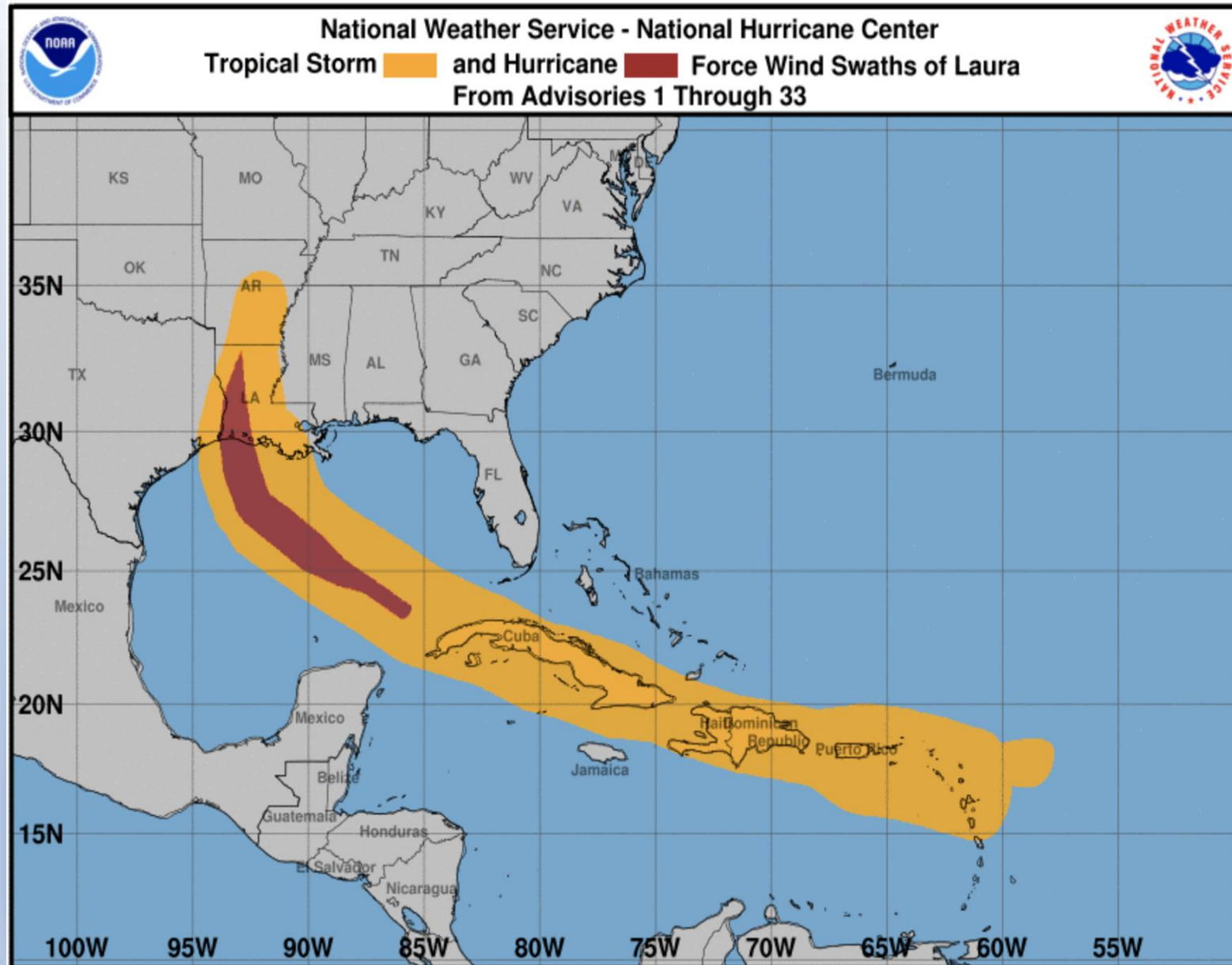
August 26-27, 2020

- Highest wind gust inland with Laura was 137 mph near Lake Charles, LA. Airport officially gusted to 133.5 mph before radar got destroyed and ASOS went down
- 955.0MB at Lake Charles Airport
- Widespread wind damage and power outages
- Limited inland storm surge
- Power still out 2 weeks later for many
- Highest sustained wind near 98 mph at Lake Charles.
- Mesovortices likely enhanced damage



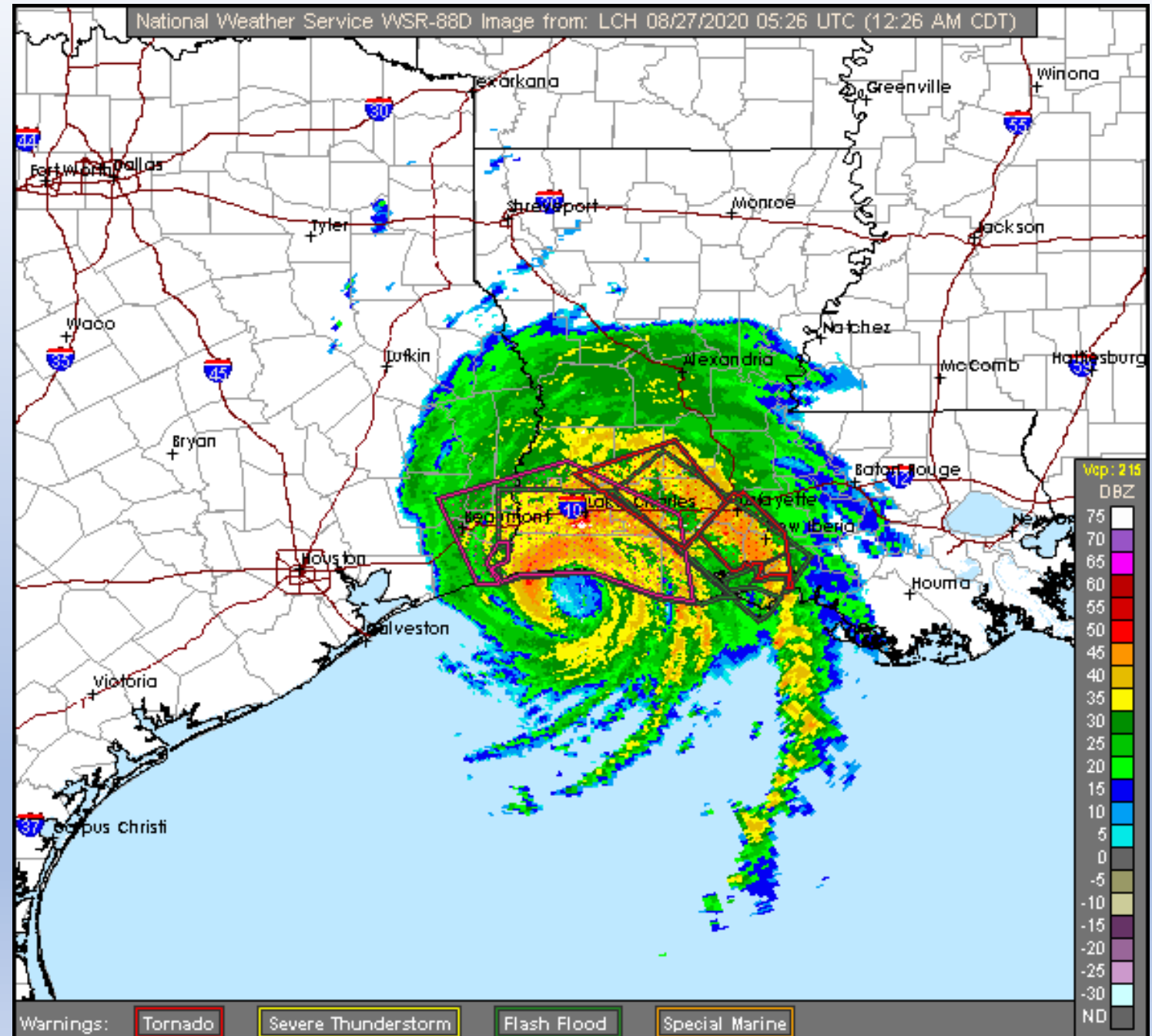
August 27, 2020

- Hurricane Laura spreads damaging winds over 150 miles inland.
- 110 miles of 100 mph wind gusts
- 150 miles of 75+ mph wind gusts
- For comparison the Iowa Derecho of August 2020 produced 250+ miles of 100 mph wind gusts!!



August 27, 2020

- Over 70 people lost their lives (many due to improper generator use)
- Upwards of \$8.9 Billion USD in damage
- Strongest storm to hit Louisiana since 1856 Last Island Hurricane in terms of wind
- 10th strongest cyclone to hit US/territories in terms of pressure (937mb)
- Second time a US radar has been knocked out by a major hurricane (Maria in 2017)



August 27, 2020

- Decision not to chase was dictated by night-time landfall
- Couldn't get any closer than 30 miles to the coast, typically where the worst conditions are, due to terrain
- Filming conditions would be poor due to power failure and midnight landfall
- Overall a very fascinating storm
- Several interesting observations
- Data will change as final report is issued next year



Sources

- National Hurricane Center
- Levi Cowan (TroipcalTidbits.com)
- Aircraft reconnaissance data (Air Force)
- National Weather Service
- Iowa Environmental Mesonet
- NWS Lake Charles radar (Thank you for your sacrifice!)
- Brett Adair (photo on the right)
- GOES satellite imagery
- Wikipedia (Hurricane Laura)

